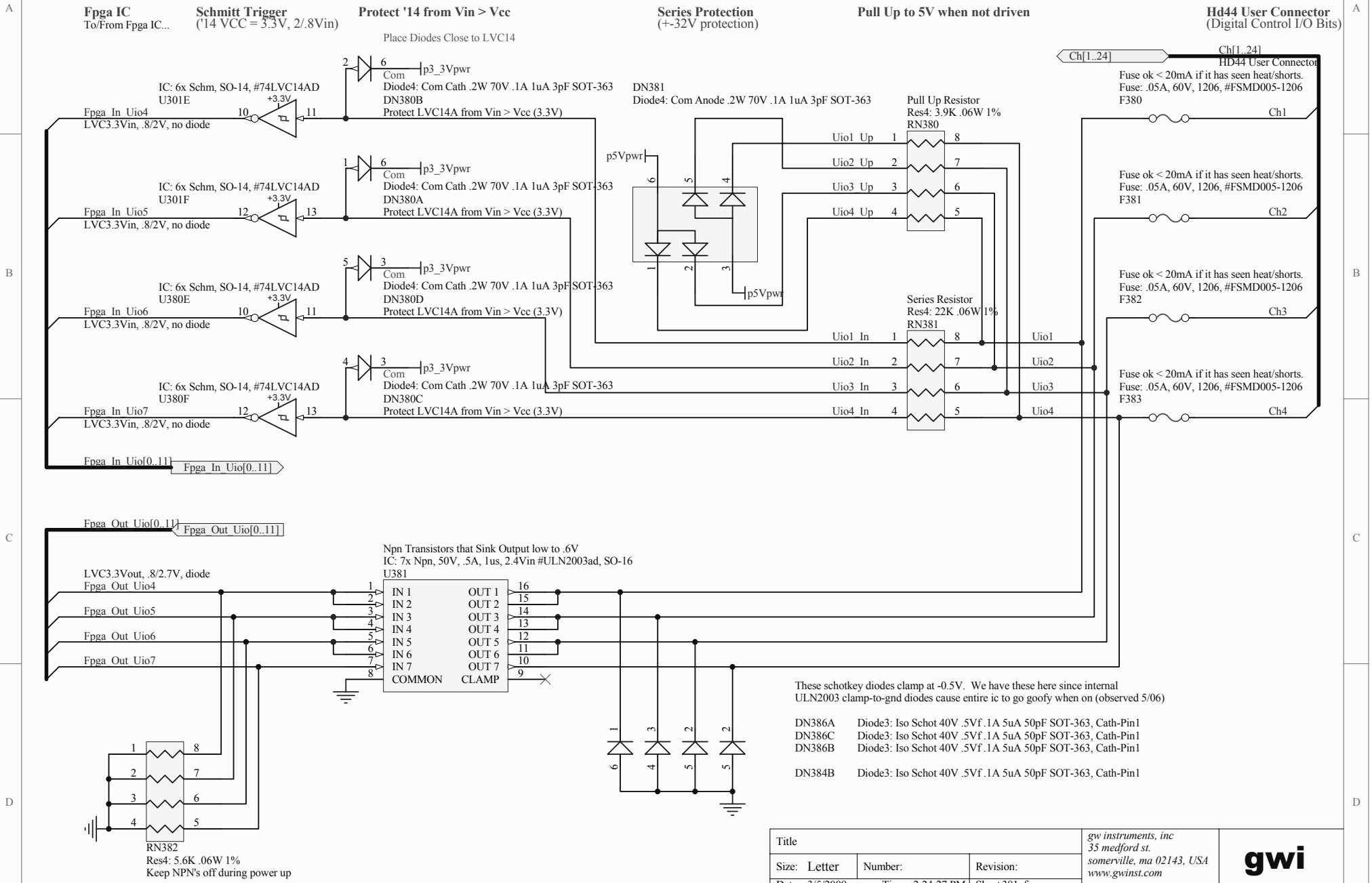


# Ch 1.4 --- 4x Din/Dout Bits

The 0.1A fuse is not safe > 30mA if it has seen shorts, heat, & is in high ambient temp (ref: i4xx testing.xls).



Title			gw instruments, inc 35 medford st. somerville, ma 02143, USA www.gwinst.com
Size: Letter	Number:	Revision:	<b>gwi</b>
Date: 3/5/2009	Time: 2:24:27 PM	Sheet 381of	
File: C:\Documents and Settings\Owner\My Documents\GWI\gwi Dev\iNet-4xx 2004 Design\i4xx schematics\i4xx Common Schematics\Common 8			